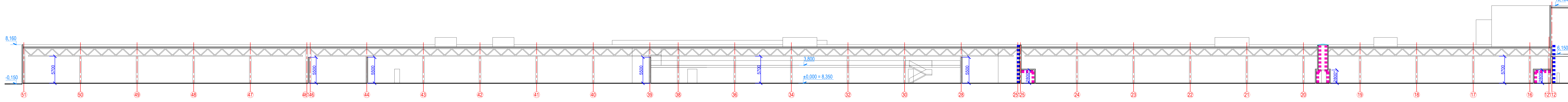
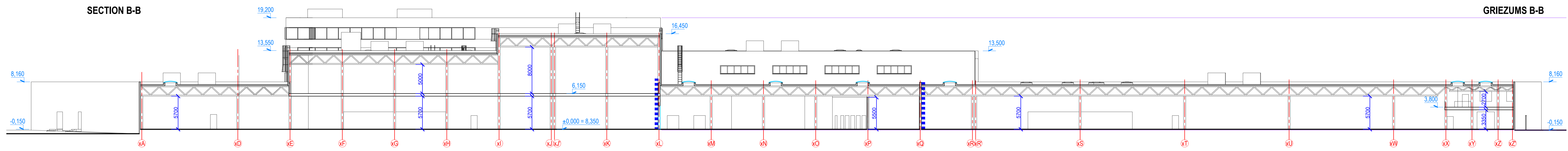


SECTION A-A



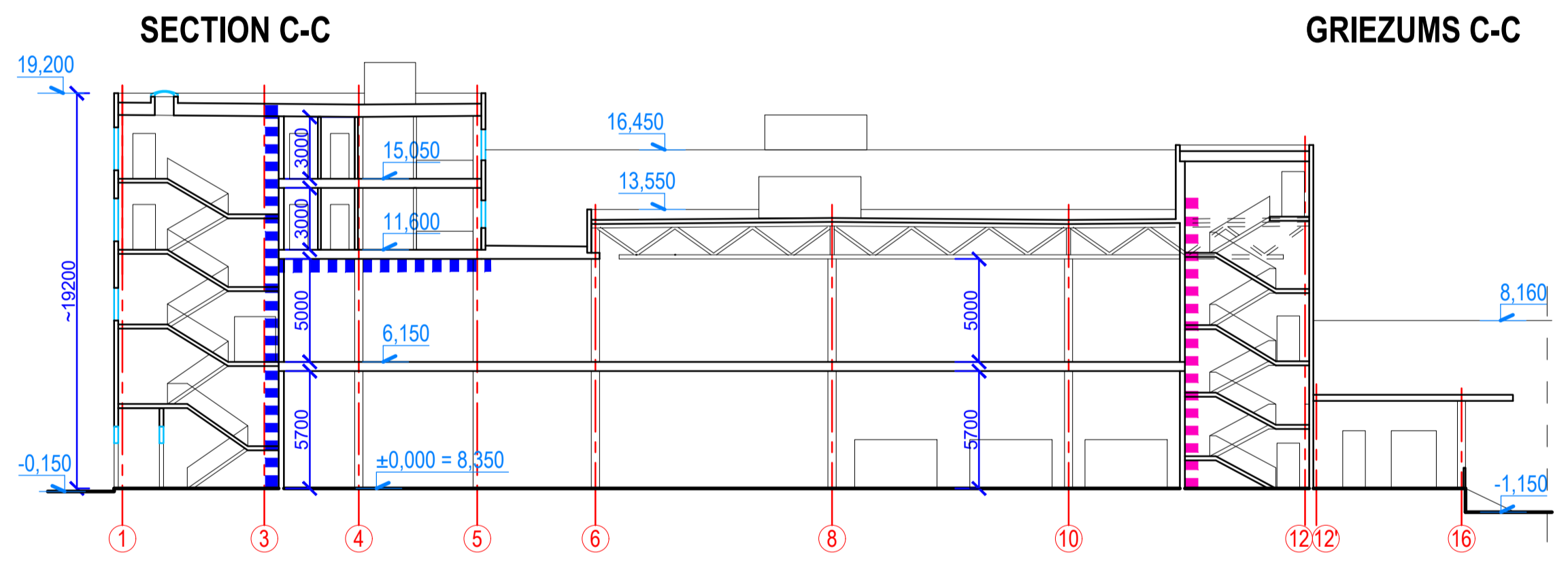
GRIEZUMS A-A

SECTION B-B



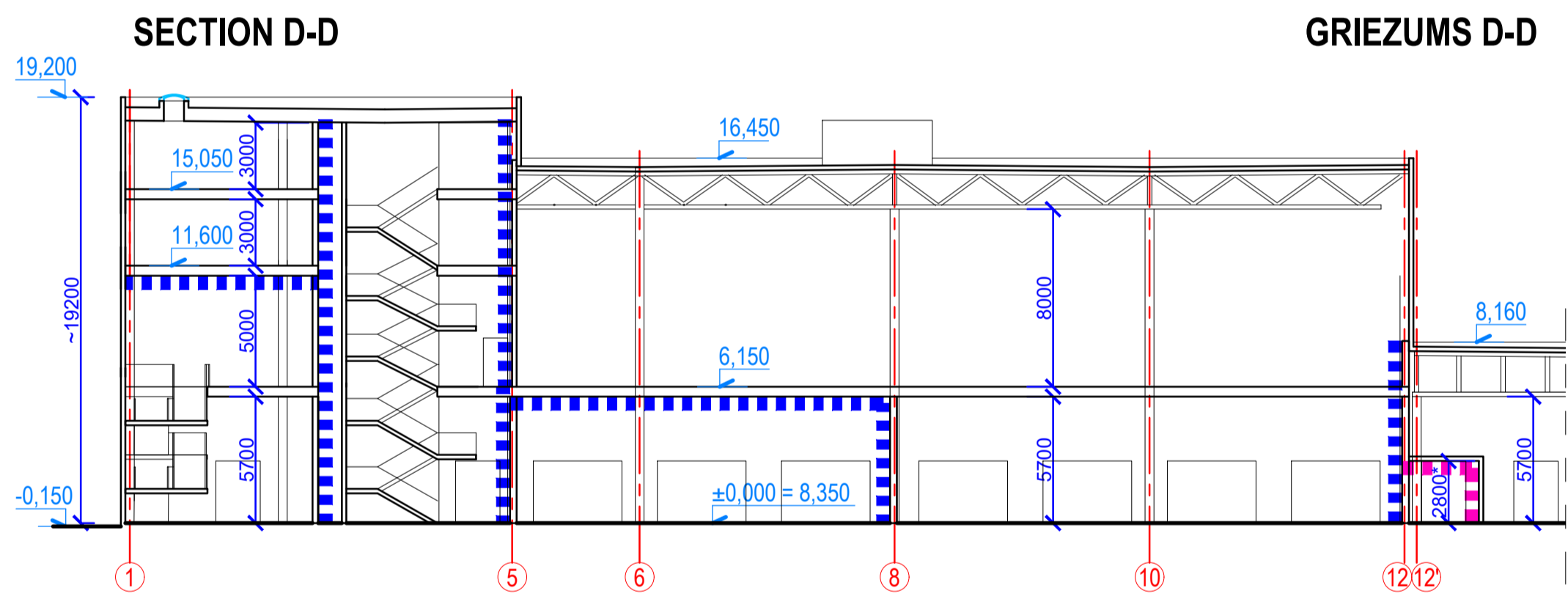
GRIEZUMS B-B

SECTION C-C



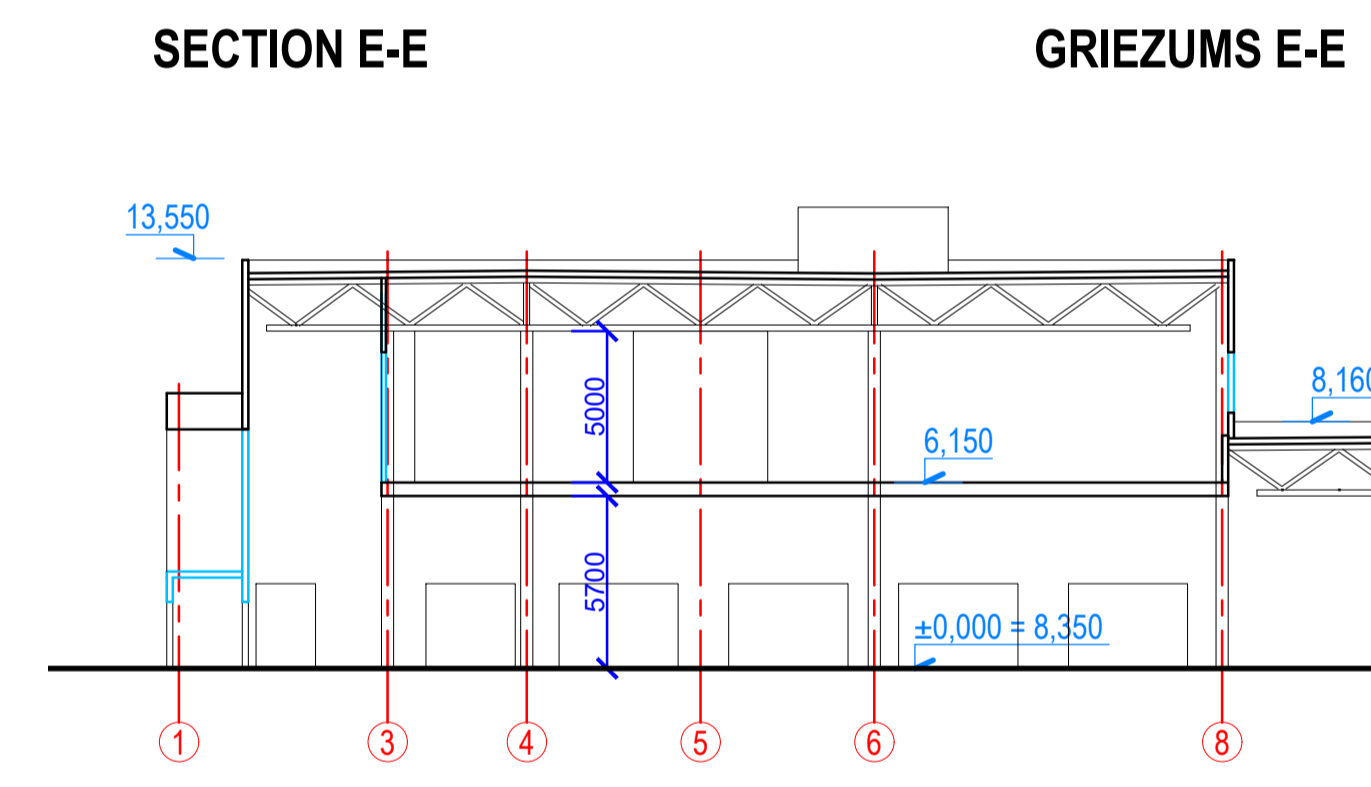
GRIEZUMS C-C

SECTION D-D



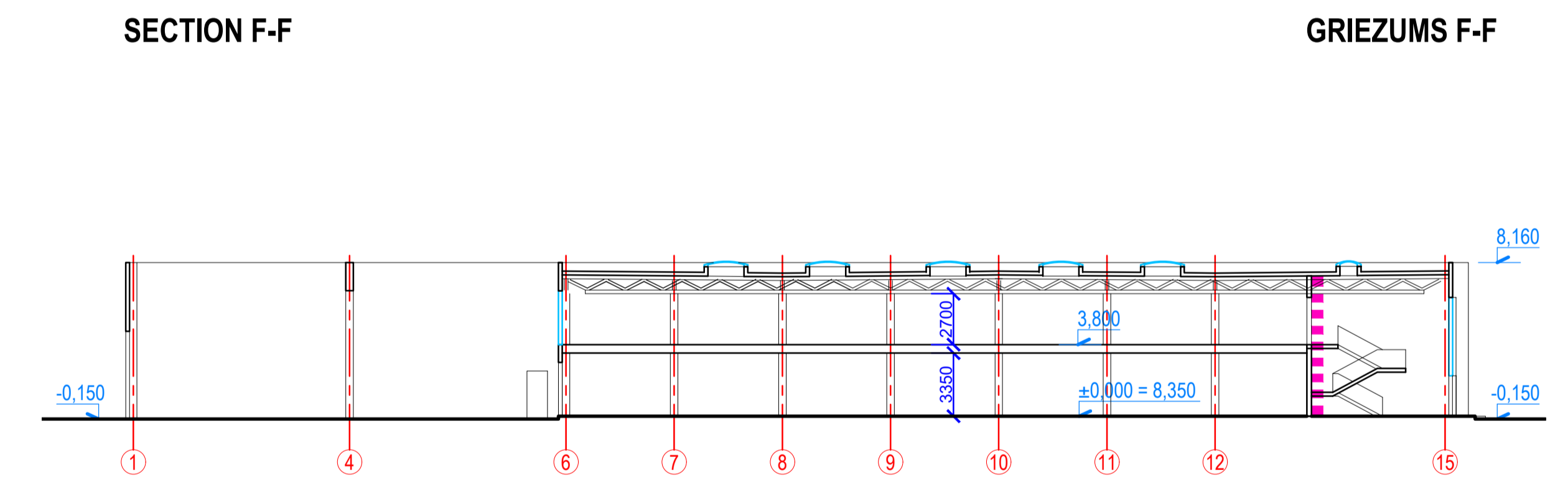
GRIEZUMS D-D

SECTION E-E



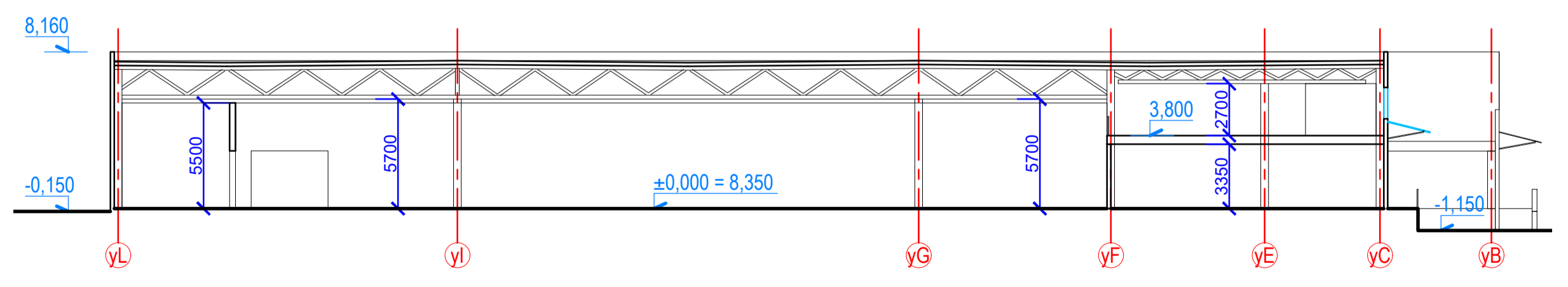
GRIEZUMS E-E

SECTION F-F



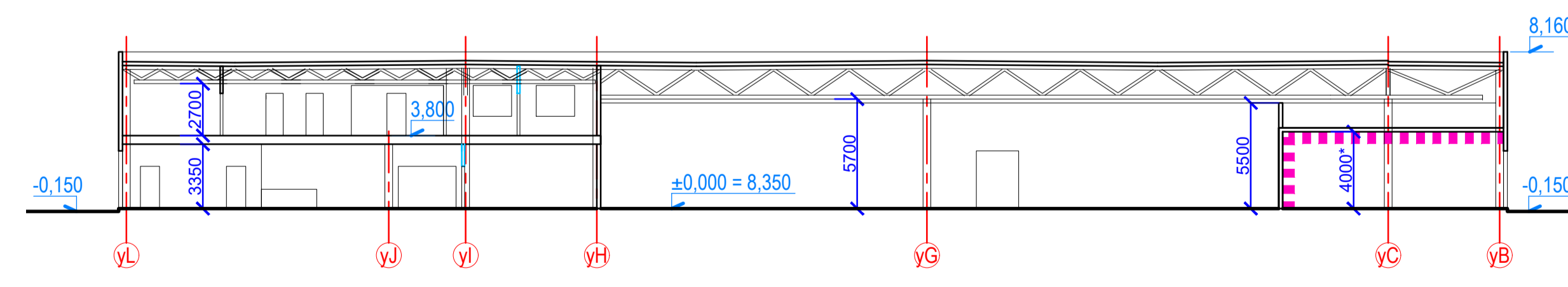
GRIEZUMS F-F

SECTION G-G



GRIEZUMS G-G

SECTION H-H



GRIEZUMS H-H

PLAN SYMBOLS PIENĒMTIE APZĪMĒJUMI.

Fire resistance requirements for construction REI-120 ■■■■■■ Ugunsizturības prasības norobežojšanai konstrukcijai REI-120  
 Fire resistance requirements for construction EI-30 ■■■■■■ Ugunsizturības prasības norobežojšanai konstrukcijai EI-30

- NOTES:**  
 1. The level of the zero altitude is taken as the floor level of the ground floor, which corresponds to the absolute height mark of 8.35 in the Latvian normal height system (LAS-2000.5).  
 2. Dimensions are given in millimeters, heights are in meters.
- PIEZĪMES:**  
 1. Par relatīvās augstuma atzīmes nulles līmeni pieņemts 1. stāva grīdas līmenis, kas atbilst absolūtajai augstuma atzīmei 8.35 Latvijas normālo augstumu sistēmā (LAS-2000.5).  
 2. Izmēri doti milimetros, augstumi - metros.

	PROJECT/ARHĪTĒVU KOMPĀNIJA "VERSUS PROIECTUM" SIA ZĪDĪKA - SIA "VERSUS PROIECTUM" SIA PROJECT/ARHĪTĒVU KOMPĀNIJA "VERSUS PROIECTUM" SIA ZĪDĪKA - SIA "VERSUS PROIECTUM" SIA	PROJECT/ARHĪTĒVU KOMPĀNIJA "VERSUS PROIECTUM" SIA ZĪDĪKA - SIA "VERSUS PROIECTUM" SIA	PROJECT/ARHĪTĒVU KOMPĀNIJA "VERSUS PROIECTUM" SIA ZĪDĪKA - SIA "VERSUS PROIECTUM" SIA	PROJECT/ARHĪTĒVU KOMPĀNIJA "VERSUS PROIECTUM" SIA ZĪDĪKA - SIA "VERSUS PROIECTUM" SIA
	PROJECT/ARHĪTĒVU KOMPĀNIJA "VERSUS PROIECTUM" SIA ZĪDĪKA - SIA "VERSUS PROIECTUM" SIA	PROJECT/ARHĪTĒVU KOMPĀNIJA "VERSUS PROIECTUM" SIA ZĪDĪKA - SIA "VERSUS PROIECTUM" SIA	PROJECT/ARHĪTĒVU KOMPĀNIJA "VERSUS PROIECTUM" SIA ZĪDĪKA - SIA "VERSUS PROIECTUM" SIA	PROJECT/ARHĪTĒVU KOMPĀNIJA "VERSUS PROIECTUM" SIA ZĪDĪKA - SIA "VERSUS PROIECTUM" SIA